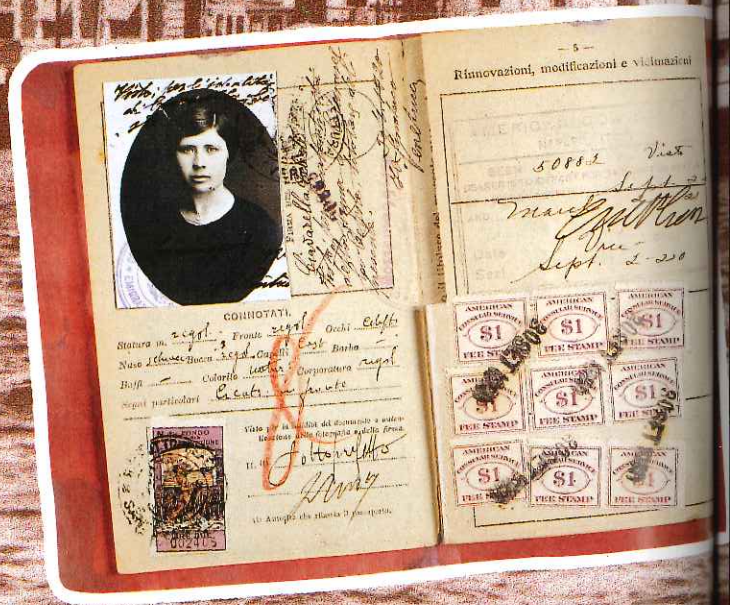
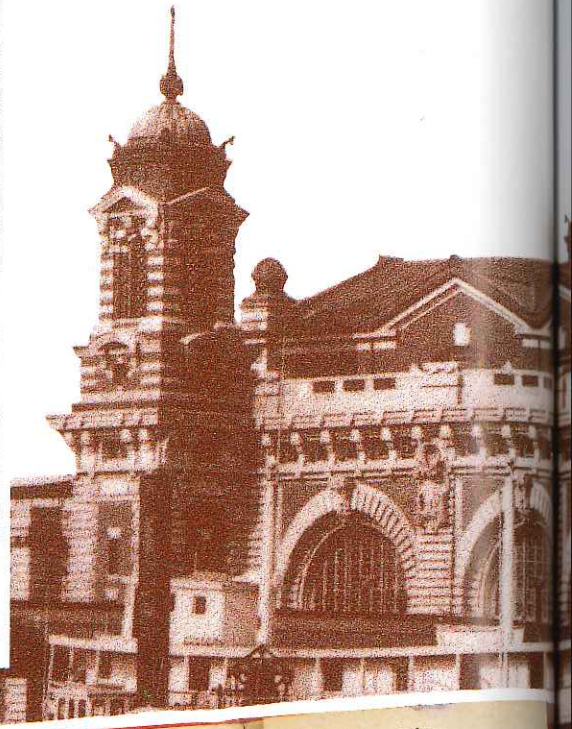


Many of the immigrants who came through Ellis Island were families with small children.



By the early 1900's, many countries required their citizens, including emigrants, to have passports. The one pictured is from Italy.

## CHAPTER 22: THE PORT

**T**he gigantic Statue of Liberty, officially called *Liberty Enlightening the World*, was designed by the noted French sculptor Frédéric Auguste Bartholdi. Bartholdi selected Bedloe's Island, in Upper New York Bay, as the site for the monument, a gift from the people of France to honor the friendship between their country and the United States.



*The Main Building on Ellis Island was built in the ornate style popular in the late 1800's. The former immigration station at Ellis Island and the Statue of Liberty make up the Statue of Liberty National Monument.*



In December 1883, the Pedestal Fund Committee held an art exhibition and sale to raise money for the statue's pedestal. Poet Emma Lazarus contributed a sonnet for the occasion. She entitled it "The New Colossus," in reference to one of the so-called seven wonders of the ancient world: a

huge statue that once towered above the magnificent harbor on the island of Rhodes in the eastern Mediterranean Sea.

Herself a Jew, Lazarus was increasingly concerned about the fate of many European Jews who were then suffering intense persecution, espe-